

General Alert Ltd – 28 May 2014

1. Overview

The General Alert system has been recognised as a mechanism for enabling a variety of environmental factors to be recorded and used for timely interventions.

There are excellent financial benefits to be gained from having reliable and up-to-date information. General Alert gives the ability to graph data from multiple sensors in multiple locations. Errors and differences are quickly identified.

All information is on www.general-alert.com

2. The Equipment

The Base Unit is the central on-site communications and connections box. Up to 48 different sensors can be connected to each Base Unit. These can be connected in any order and in any combination.

To connect a sensor to the Base Unit a POD is needed. The POD is an intelligent connection board that interprets the signal from the sensor for use by the Base Unit.

We supply all sensors that can be used with General Alert. The list of sensor types is increasing all the time, temperature, humidity, ORP, pressure, pH, water flow, time, and others.

On general-alert.com, go to Application Areas, and as an example click on the Temperature button. You will then see all of the parts needed to collect temperature data.

3. Communications

There are several ways of extracting data from the Base Unit on-site.

- The basic level of communication is to use a SIM card in the GSM modem inside the Base Unit. Data will be sent from the Base Unit each day just after midnight. The data will normally be, for example, hourly water flow totals, hourly average temperatures, hourly average humidity values etc.
- Many customers find that a live data stream can be beneficial. This is achieved either by connecting the Base Unit to the internet using an Ethernet cable to a router on-site or, if this is not possible, a 3G router can be used using a data-only SIM card.

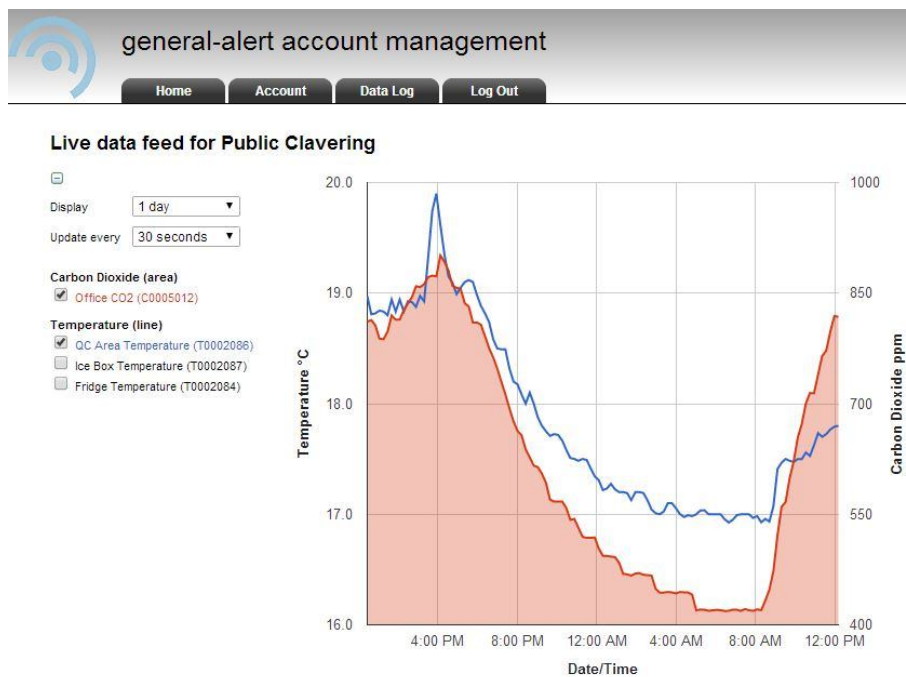
Cable connections are more secure compared with a local radio connection. However some sites require radio links between different locations locally. This can be achieved with General Alert.

4. The Web

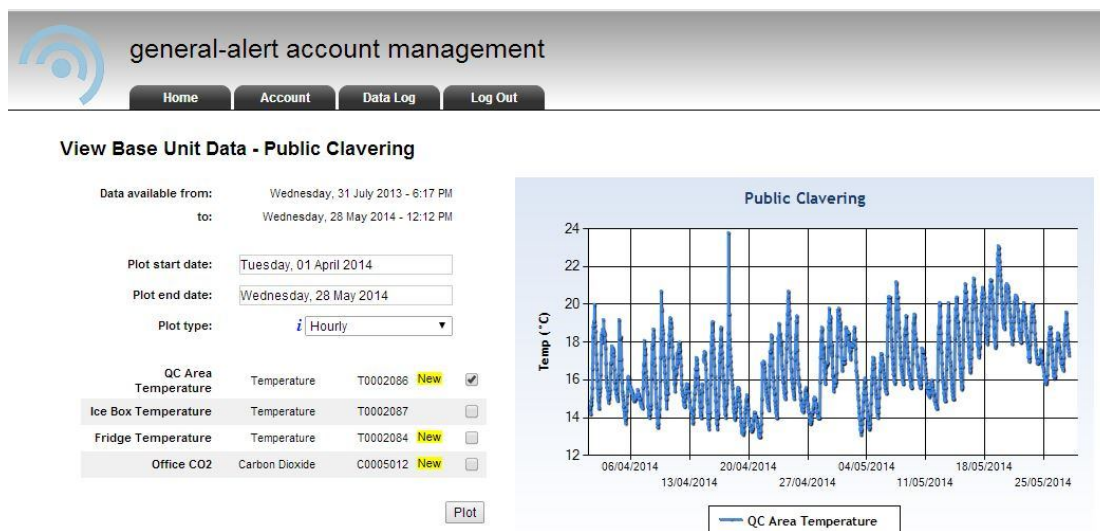
Data from Base Units is sent to a Core facility operated by General Alert. Access to this site is by a username and password allocated to each customer. There are different levels of access so that some employees can see the data but are not permitted to alter settings.

On the web site, sensors can be named (e.g. "Temperature House 7"), Alarm levels can be set for each sensor (e.g. max 31C for House 6), contacts can be listed to receive Alerts by SMS, and a multitude of other facilities.

Live data can be viewed:



And historical data can also be found and graphed:



To try the system go to www.general-alert.com and click on the "Try It" button. All instructions are listed.

General Alert

28 May 2014